

# Create your *Dream Wall!*

## 6 Different Heights



## 4 Different Widths\*



## 2 Finishes



\* Width is the base measurement.  
Add 2-1/2" to include full Crown Molding.  
Overall unit depths are 13-1/4"D on all sizes.  
Adjustable Shelves: 11"D  
See catalog for more detailed specifications.

This collection of bookcases is classically designed. Solid American Alder and Red Birch wood panels ensure beauty, strength and durability that last a lifetime. The offering is broad with six heights, four widths and two finishes. Plan out what you want; it's easy to create the look you desire.

### Standard Features

- Dowel and pocket screw construction for strength and durability.
- Fitted backs for structural strength.
- Adjustable solid wood shelves.
- All 72"H and 84"H units feature fixed center shelves for stability.
- Made from sustainable American hardwoods.

## 1: MEASURE THE ROOM

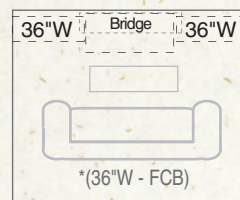
Make sure to note which way the doors open and where the windows and plug-ins are located.

## 2: DESIGN YOUR SOLUTION

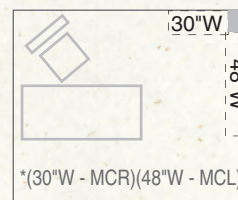
Using the measurements of the bookcases, decide what's the best size and style for you. Try different arrangements for an optimal outcome. Lower bookcases are great for under the window and creating credenzas using a Corner Connector.

### EXAMPLES:

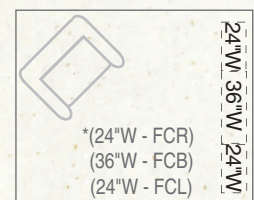
Corner Connector: \*Cuts Noted



Living Room



Office/Library



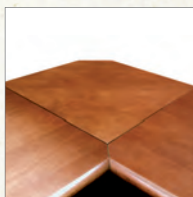
Bonus Room

## 3: MAKE IT YOURS with CUSTOM OPTIONS

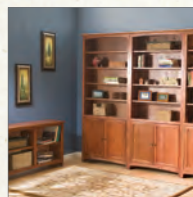
Explore the various options on page 2. If you need any assistance feel free to contact your Whittier Wood Furniture Retailer.



DOORS



CORNERS



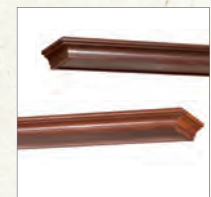
COMBINATIONS



CUSTOM CUT



BASKETS



MEDIA BRIDGES



2168AEGAC 54" McKenzie Media Console w/ Notched Top, 2060AEGAC 72"W Bookcase Bridge, 1525AEGAC 72"x24" Bookcase w/Doors



1611AEGAC McKenzie Center Wall Unit w/Doors, 1525AEGAC 72"x24" Bookcase with Doors. Also shown: 2401AFGAC 4-Drawer McKenzie Desk, 74KFGAC Bistro Chair



1537AECAP 84"x36" Bookcase w/Doors(FCR/FCL), 1526AECAP 84"x24" Bookcase(FCL/MCR)(FCR/MCL), 1509AECAP Corner Connector, 404W3 Seagrass Baskets

## Custom Cut Options

**Custom Cut Molding** is available on all assembled bookcases. This is ideal for making a run of bookcases with a finished crown molding look. Each cut is custom when you place your order.

### Cut Molding Options\*

- FCB** = Flush cut both sides of crown
- FCL** = Flush cut on the left side only.
- FCR** = Flush cut on the right side only.

For Corner Configurations order:

- MCL** = Miter cut left.
- MCR** = Miter cut right.

\* Direction when facing the front of the bookcase.

### Flush Cut



FCL cut molding.

### Miter Cut



MCL

MCR

## Corner Connector Kit

connects two bookcases of the same height allowing for a finished look and maximum use of space. Each custom ordered Corner Connector comes predrilled and is cut specifically for that order. The footprint of the corner is 12".

## Accessories

**Door Kits** are available for the bottom of the 72"H and 84"H bookcases. Door Kits feature adjustable Euro hinges. There are different size doors for the different widths of bookcases.



2-Door Kit

4-Door Kit

**Media Bridges** are available for combining bookcases and select media consoles.



2060AEGAC 72"W Bookcase Bridge  
72"W x 14-3/4"D x 3-1/2"H



2061AECAP 84"W Bookcase Bridge  
84"W x 14-3/4"D x 3-1/2"H

## Seagrass Baskets

are great for smaller items that might normally go in a drawer.



404W3 3-Pack  
10"W x 13-1/4"D x 8-5/8"H

## Compatible Units

**Notched Media Units** are available for a unified look when combining bookcases and select media units.



Close up of Notched Top.

**Center Wall Units** are available with or without doors to optimize space and can be combined with other bookcases.



1610AEGAC



1611AEGAC

Center Wall Unit  
39-1/2"W x 18-1/2"D x 76-1/2"H

For detailed information and specifications please check out our catalog at [whittierwood.com](http://whittierwood.com) or contact your local furniture retailer.